



In this issue

- Message from EC
- Talking Points
- New Governance Structure
- Scholarship
- Secretary/Treasurer Report
- What is Leadership
- The Value of Volunteering/
Membership Report
- School Affairs Update
- GAC Update
- CEUs & Independent Studies
- MSHA Info
- September 26 Conference
***Sharing the Responsibility
for Literacy***

Dear Colleagues:

Welcome to the latest edition of the MSHA newsletter, the VOICE. You may notice right away that this edition is different from the layout and content of the past few years, and I would like to speak directly with you about why that is, and why it matters.

MSHA has been in existence for over 50 years. In that time, MSHA, and the hard-working people who make up its leadership, have worked valiantly to bring benefits to the membership. This has included providing high quality CE programs, providing resources and support to members, and being the voice and face of legislative advocacy on issues affecting the professions. This work is not easy, and it is often thankless, frequently overlooked by the majority of colleagues, who nevertheless reap the benefits of the efforts of those who give. Did you know that right now, MSHA has a total membership of less than 400 people? Did you also know that Massachusetts has over 4000 licensed/certified professionals? This means that the 10% who belong to MSHA have been long carrying the financial burden of supporting the work of MSHA, including paying for our management office (the front line when you contact us), the lobbyist, as well as everything else. And in the current economic climate, things are reaching a financial crisis point. It is this that I would like to discuss with you.

MSHA has lost several members of Executive Council in the past few months, including the person who was slated to assume the editorship of this newsletter. After careful consideration, it was decided to make this edition of the VOICE all about MSHA... where we are, what lies ahead, and how much we need you.

I have been involved in MSHA's Executive Council for the past 10 years. I have seen both highs and lows, in terms of membership numbers, income, debt, legislative success and even difficult leadership transitions. In that time, I have also seen MSHA come to a financial crisis point before; this has always resulted in a renewed spirit, and a strong comeback. In order for that to happen again, we need YOU—in every way possible. How can you help, as a MSHA member? Let me count the ways:

Keep your membership current. First, and foremost, you may have already done the first and best thing, by becoming members, or renewing your membership. If you are a member, thank you, thank you, thank you! Your dues go to supporting all of the projects that MSHA does to benefit ALL SLPs and Audiologists, and your membership is appreciated. If you are not a member, or if you have not renewed this year, please do so. Your membership is critical.

Talk to your friends and colleagues about MSHA and why it matters. How many of you work in a hospital, clinic or school where you may be the only one who is a MSHA member? Why is that? It is a question that we have tried to answer as leadership, but we have come up at a loss to understand why so many of our colleagues believe that there is no value in being a member. If everyone who is now a member brought just ONE more person into the Association, it would have a huge positive financial impact. If you brought 2 or 3 people into MSHA it would be amazing. It should be easy to talk about why MSHA matters, but see below for a list of talking points that may be helpful.

Consider volunteering your time in a leadership role within MSHA. Later in this issue, you will be able to see the new governance structure, set to begin in 2010. This new structure provides for varying levels of involvement, and more equally spreads the work among members of the Executive Council. While I often hear people say that they can't volunteer because they have jobs and families, remember that everyone on Executive Council works full time, and most have children. Even giving a few hours a month can make a difference. This is why we have all but eliminated standing committees, with long terms of service that have been hard to fill. Be sure to read the re-organization article and see what might be possible for you.

Attend MSHA events. MSHA has a long history of providing the highest quality continuing education events, bringing in the best speakers from around the Commonwealth and the country. In the past 18 months, we have had a significant decline in our attendance. This has drained our bank accounts, and made it more difficult to book new events, since we lack the financial means to assume the higher risk. Although we are aware that the economy is hitting everyone hard, we rely on attendance at our events to keep our dues low. Our next event is in September, to be held at Emerson College. See the article below with more details.

Speak up. Do you have a concern? A question? An idea? The people who make up Executive Council are no different from you.... And we can't possibly discern what would be the best way to serve the membership without direct input from those who would benefit. Our new governance will help put some structure around this, but you can always contact the office or any member of Executive Council. Many who have raised issues in the past found that they received support, information and assistance, colleague to colleague, in ways that made a positive difference.

This is my final letter as your Past President. I have spent the better part of the past 4 years working hard to keep MSHA moving forward. We have made great strides with bringing MSHA into the new age of technology, and working hard to always be a value to our members. In fact, I have continued in the role as President this year, with the support of the Vice Presidents, because no one stepped forward to be President Elect. There is still no one slated to assume that leadership role once I leave it in December; however, the time has come for me to step back and begin to focus on my own life and my own personal and professional goals. It is my greatest hope that the work we have done here will continue, and that MSHA will re-emerge, stronger and better, to advance the goals and best interests of all of us.

It would be a waste and a shame if MSHA were to dissolve, and leave speech, language and hearing professionals in the Commonwealth without a voice and an ally. Please consider how you might be able to participate in the next era of MSHA's history. It is up to you, and each one of us, to make sure that MSHA survives to write another chapter. Please give what you can of your time, your energy, your expertise and your support. MSHA needs you now more than ever.

Warmest regards,
Suzanne M. Ducharme, MS CCC-SLP
MSHA Past President

WHY DOES MSHA MATTER? Talking Points

Below are some points you can make with your colleagues when discussing why MSHA is important:



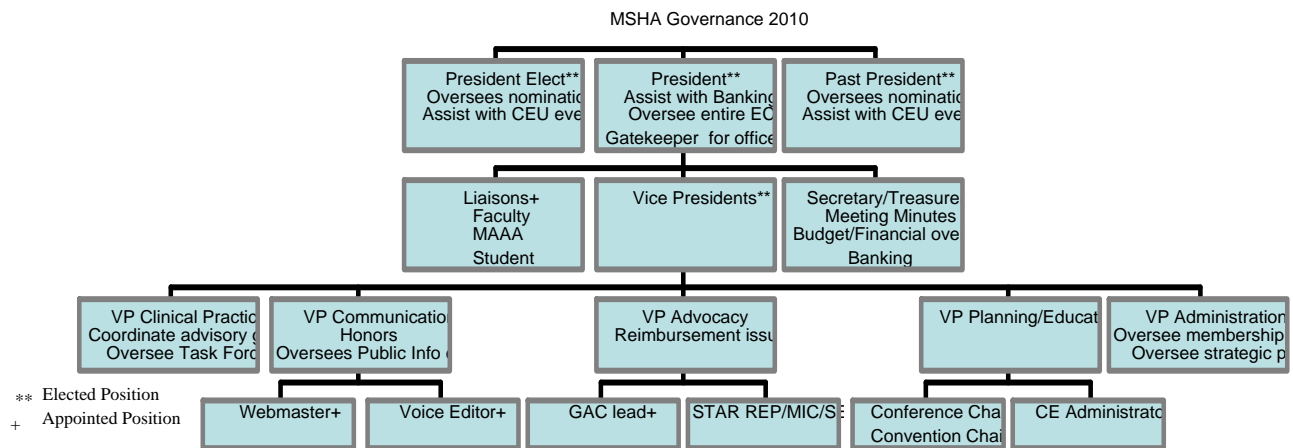
- Our voice on Beacon Hill:** When legislation that affects us is proposed in Boston, MSHA is the only group that is advocating for you and your needs. ASHA is informed, but they do not get involved in direct lobbying efforts for the most part.
- Continuing education:** MSHA provides continuing education locally. Helping you fulfill the requirements for state licensure and national certification at affordable rates. Watch for new ways to earn CEUs in the coming months.
- Discounts:** MSHA members receive discounts on everything that MSHA does or offers, including job postings, e-mail blasts, and educational events. In addition, there are new group discounts for members who join or renew together and low rates for CFs in their first year of clinical practice.
- Networking:** MSHA is a great way to meet and connect with colleagues and friends, old and new. MSHA also provides the membership directory.
- Referral directory:** If you are in private practice, you can list your company/services on the MSHA website for a small fee. This increases your visibility and brings in business.
- Unity and shared purpose:** Many hands make the work lighter. Working with others who share your passion or your concern empowers you and helps you develop a sense that you can make a difference in your professional life.
- Leadership opportunities:** Being involved in MSHA allows you to develop your leadership skills, which can also be helpful in your own workplace and in your personal life.
- We are all MSHA:** Whether we are paying members or not, we reap the benefits of those who do the work on our behalf. Stepping up and being a part of the positive change and growth that is possible with a strong MSHA benefits everyone.
- Professional responsibility:** We all belong to various groups and associations for different reasons. MSHA is the state association, responsible for advocacy on issues on the state level. It is each person's responsibility to contribute for the common good.
- Resources:** The MSHA website, Job Center, the newsletter, document archive, insurance benefits and many others. See elsewhere in the newsletter for more information.

And thank you for your membership.

MSHA Announces New Governance Structure

As you have been reading about in this year's editions of the VOICE, MSHA's Executive Council has been working on a new strategic plan for the next few years. One of the primary things that we discussed is the difficulty in recruiting and retaining, good people to fill the leadership roles in MSHA. In addition, the current structure has been in place since 1993, and it no longer seemed to meet the needs of today's Association. For example, we have had standing committees like Private Practice, School Affairs and Public Information that have been without chairs, or members for several years. As a result, our ability to take on and complete projects for those segments of the membership has been compromised. In addition, it has left the bulk of all the work to be done by a dedicated few, many of whom are leaving Executive Council at the end of this year.

During the strategic planning meeting, we began to finalize some of the ideas that we have been discussing for over a year. We completed an analysis of other state association structures, we got input from ASHA, and finally came up with a plan that we hope will be the flexible and dynamic structure needed for a volunteer organization. It is my great honor to share with you now what will be our organizational structure moving forward. I will first present the organizational chart, followed by a discussion of some of the major changes.



Here is a summary of some of the major changes:

- ❑ The term for the President has been shortened from 4 years to 3, including one year as President Elect, one year as President and one year as Past President.
- ❑ We have increased the number of Vice Presidents, now clustered according to content. As you can see above, we now have a VP who oversees all aspects of Communication, including the website, newsletter and public information. Increasing the number of VPs, who will still be elected to 2-year positions, spreads out the workload and provides for a tight Executive Committee in making decisions about the direction of the Association.
- ❑ We have eliminated standing committees. In the past several years, we have been unable to fill many positions on committees, resulting in less productivity in those areas. Under the new plan, the overseeing VP will be responsible for the direction of resources, and in convening and directing the efforts of Ad Hoc Committees and Task Forces. These short-term groups would be focused on the completion of a specific task or event, and it would not require fulfilling a lengthy term of office.
- ❑ In order to increase the input that we receive from the membership and the wider professional audience, we will be convening Advisory groups according to practice settings. These groups would meet either face to face or by conference call quarterly or as needed. These groups would be solely for the purpose of discussing and identifying issues that impact those within the advisory group. If an issue were identified that required some action, it would be the purpose of the group members to generate an action plan and provide the manpower to achieve the goal. This provides a direct link from problem to solution, and will allow each one of us to participate in making a difference within

MSHA. This also provides the opportunity that many have asked for, which allows for focused, short-term involvement in MSHA, and the chance to have an impact. I hope that you will all participate in an Advisory Group.

- We have added liaison positions to Executive Council, to increase our communication with important constituent groups within the Commonwealth. One of these is students. We have made an effort within the past few years to reach out to students, since they represent the future of the Association. Another liaison position is a faculty member. We are hoping that by increasing faculty involvement, we can establish a vital link from University to clinic, for the benefit of all. We also hope to include a member of the MA Academy of Audiology, a sister organization in MA. We have already begun working on ways to pool our resources and to meet the needs of our Audiology colleagues in a flexible way. These positions will be non-voting.

These are the primary changes that have been approved. Beginning with this year's election, these new positions will be open for election and appointment. Please take a look at this new structure and see if there is a place for you in it. MSHA is in need of new leaders; as stated, several people are leaving Executive Council at the end of this year. MSHA needs you, if we are to continue making a difference for all.

Submitted by:
Suzanne M. Ducharme, MS CCC-SLP
MSHA Past President

MSHA is proud to recognize the leaders of the past, present and future.

MSHA is proud to announce a new scholarship, to be given out annually, beginning in 2010. The Judith Bernier Leadership Award will be the newest chapter in MSHA's history of giving financial scholarships to deserving undergraduate and graduate students enrolled in Communication Disorders programs in the Commonwealth. This award was designed to honor the long history of service and exemplary leadership of Judith Bernier, who left MSHA last month to pursue new opportunities in the Pacific Northwest. A profile of her contributions was included in the last edition of this newsletter.



This scholarship will require a nomination by a faculty member, and will be designed to reward those graduate students who have exhibited leadership skills or significant potential for leadership within their graduate program. More details will be provided as they are finalized.

As you know, MSHA is able to give scholarships based on your contributions. In addition, funds from silent auctions and raffles at our continuing education events are often put into the scholarship coffers. If you would like to make a donation in Judith's honor, or just to support this program, you can send a check or donate online by logging into your account and clicking on the tab that says MAKE A CONTRIBUTION now.

MAKE A CONTRIBUTION

Secretary-Treasurer Report

The MSHA Executive Council has been very busy supporting Massachusetts speech-language pathologists and audiologists despite many challenges. MSHA derives its income primarily from two sources—membership dues and revenue from continuing education. Both areas have shown a marked decline over the past few years. At the middle of this year MSHA faced a loss of almost \$10,000 as a result of drastic reductions in revenue. MSHA is projected to end 2009 with a loss from operations between \$15,000 and \$20,000. Bankruptcy may be inevitable within the coming year or two if the financial situation of MSHA does not improve.

Membership: About 4000 speech-language pathologists and audiologists are licensed in the state of Massachusetts; however a mere 300 of those professionals are members of MSHA. The remaining 3700 licensed professionals have no voice in the operation of their state association. Please consider renewing your MSHA membership today by clicking on the "Membership" tab on the MSHA website to renew online. Your dues of \$60 per year go a long way toward the solvency of your state association. Membership is now on a rolling basis so if you join MSHA today you will be a member until next year at this time. MSHA needs 200 more members to reach its year-end goal of 500 members!

Donations to MSHA have also decreased along with declining membership. A few years ago donations were a viable source of MSHA income but that income has also dwindled. When you renew your membership please also consider contributing something extra if you can.

As we all continue to experience the effects of the weak economy I would like to remind you that MSHA offers a variety of health insurance products, exclusively to MSHA members, under the direction of health services administrators. State law now requires residents to carry health insurance and the changing economy brings changes to the personal benefits of many individuals. MSHA is proud to offer this health insurance program to its members so please click on the "Membership" tab on the MSHA website for more information.

A very special thank you goes to those loyal MSHA members who continue to support their state association by renewing membership, attending MSHA continuing education programs, volunteering for committee work and contributing in any way possible.

Continuing Education: Many of you have received notice of the exciting fall conference that is being held on September 26, 2009 at Emerson College in downtown Boston. Join other school-based SLP's as Barbara Ehren, EdD, CCC/SLP presents the latest information on the role of the speech-language pathologist with literacy and Response to Intervention. Dr. Ehren has recently published *Response to Intervention: An Action Plan for School Leaders*, which offers Special Education Administrators, school principals, and other school leaders specific details about implementing Response to Intervention—all from the unique perspective of a speech-language pathologist! If you have not successfully implemented the ASHA workload model in your school district or if you are need assistance with your role in Response to Intervention then this is the conference for you! Registration information is available on the MSHA website at www.mshahearsay.org. If you are unable to attend the conference yourself please forward the conference information to someone else who can benefit, such as your school principal or Special Education Director.

The new MSHA strategic plan also includes a goal to offer expanded opportunities for continuing education, such as webinars, teleconferences and the like so that members from all parts of the state can participate without incurring travel expenses. How do you learn best? What is your preference for continuing education? Let us know and we will do our best to accommodate.

Finally, this abbreviated newsletter is testimony to one of the challenges that MSHA is facing. Changes in the MSHA Executive Council and the personal and professional demands of our members have forced us to examine our way of doing business. A new strategic plan and re-organization are in process to streamline our operations. The re-organization and strategic plan allow greater flexibility and more options for short-term member involvement. As always, member input is welcome and appreciated. Use the "Contact Us" tab on the MSHA website to provide suggestions, feedback or comments on ways to strengthen and sustain your state association.

Thank you for your support!
Martha H. Testa, PhD, CCC-SLP
Secretary-Treasurer

What is Leadership?

According to Don Clark leadership is a process by which a person influences others to accomplish an objective and directs the organization in a way that makes it more cohesive and coherent. Leaders carry out this process by applying their leadership attributes, such as beliefs, values, ethics, character, knowledge, and skills. (<http://www.nwlink.com/~donclark/leader/leadcon.html>)

As found on Wikipedia, M.M. Chemers defines leadership as the "process of social influence in which one person can enlist the aid and support of others in the accomplishment of a common task." Wikipedia continues with a definition more inclusive of followers comes from Alan Keith of Genentech who said "Leadership is ultimately about creating a way for people to contribute to making something extraordinary happen." (<http://en.wikipedia.org/wiki/Leadership>)

What most of the definitions have in common is that leadership requires someone to help others accomplish goals and objectives. Leadership skills are created not innate. If you think about it everyone has the capability of becoming a leader.

Why would a person want to become a leader? One of the basic reasons that I became a leader is to make change happen. Getting things done through people is a way to achieve that change. Realizing the goal has been achieved instills one with a sense of accomplishment and pride that you had an important part to play.

MSHA needs new leaders. Many of us have been on the executive council for many years. My length of service is approaching 12 years. I have learned valuable lessons from those who came before me and I made many mistakes along the way. I was just a school-based speech pathologist who had a vision, a goal, and learned how to get that goal accomplished.

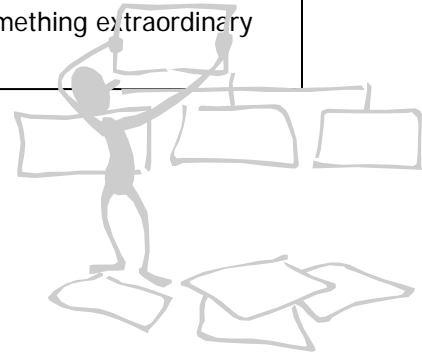
Over the years, I have heard many of you offer ideas and opinions about what MSHA needs to do, another law that should be passed, or even complaints about the way things were getting done. The time is now for you to step forward and become a leader. Do you have an idea that you would like to see MSHA implement? Is there a burning issue that needs to be resolved? Do you want to see more continuing education? It is really simple to become a leader and accomplish your goal.

According to Bob Arzt, president of InsuranceCoachU, and trainer for leadership development for ASHA, it's simple to take a leadership role.

- Keep challenging yourself to become a better person.
- Know who you are and where you're going.
- Be positive and become a positive influence.
- See the best in others.
- Be a lifelong learner and always seek to grow personally and professionally.
- Admit mistakes and learn from them.
- Be a great listener. Seek first to understand others and then be understood by others.
- Always act in harmony with your values.

If you have a desire to work for the association and inspire change, now is the perfect time to become one of MSHA's leaders. There is a new organizational structure that allows for everyone to take an active part in the association. Review that structure and see where your skills can best be used. Contact one of the officers or e-mail president@mshahearsay.org. I hope that you will consider the impact that you could have on the future of MSHA and the change that can be implemented.

Submitted by
Sharon A. Parisi, CCC-SLP
Past President, VP of Professional Practice



The Value of Volunteering

Three years ago, I received a phone call from my CF supervisor, Judith Bernier, a long time member of MSHA. Judith was calling to nominate me to the MSHA Executive Council as co-chair of membership. I had heard about MSHA and had always meant to join, but had never got around to it. I was excited to be considered as a nominee and interested in making some connections with other professionals as I was new to the state. When I arrived for my first meeting, I was very nervous as I'm not usually comfortable meeting new people. I was put at ease immediately as the people sitting around the table were open and excited to see a new volunteer. I have been a member now for three years, and have enjoyed every moment. I have had numerous networking opportunities, attended fabulous continuing education courses, became an advocate for my profession, and became more at ease with meeting new people. I take the opportunity as a clinical supervisor to educate my mentees on the importance of becoming involved in their state organization. I can only hope they will have the same positive experience I have had.

Submitted by Lisa Primeau
Co-chair, Membership

There is Strength in Numbers – Why We are Members of MSHA

As Speech Language Pathologists and Audiologists we face many challenges in our careers that seem insurmountable as individuals, but become manageable as a group. By becoming a member of MSHA, you are joining your peers to address these issues and create effective solutions. It is through the collective power of our membership voice that we are able to fulfill our mission. MSHA is the only organization in the state that is dedicated to advocacy on your behalf, even if you have not been a member in the past we have been working for you. MSHA can only continue to grow, implement new services, and support our profession with YOUR help.

The average cost for membership to state organizations is \$70, with some states costing as high as \$130. The cost of a MSHA membership is \$60 for an individual for 12 months, and if you join as a group the cost is even lower. Unlike many other states, we offer a rolling membership year. Your 12 month membership starts the day you sign up. We are also one of less than 10 states that offer free membership to students enrolled in a Massachusetts Speech Language Pathology or Audiology program. We haven't forgotten new graduates either. This year we initiated a discounted membership rate for new graduates of \$40.

The revenue MSHA earns from membership dues funds legislative advocacy at the state level, continuing education opportunities, the website and our newsletter, [The Voice](#). The members who volunteer for programs, projects and MSHA's Executive Council play a vital role in keeping MSHA running and growing. Of the thousands of Speech Language Pathologists and Audiologists licensed in this state, there are only 376 MSHA members. MSHA has played an active role in state legislature to protect the integrity and value of your license and certification as a qualified clinician, as well as legislature that helps your consumers have access to qualified providers and much needed services.

Rewards of becoming a member include a variety of continuing education opportunities, discounts to products and services, access to the members only section of the web page, our quarterly newsletter, access to our Job Board, access to our provider directory, and access to affordable health insurance through our partnership with Health Service Administrators.

Please visit the Membership page at www.mshahearsay.org to learn about money saving discounts and join our organization. We are looking forward to seeing you.

Submitted by Lisa Primeau
Co-chair, Membership



**School Affairs
Committee Update**

As we wrap up the summer months and are heading back to school, I would like to take a few minutes of your time. MSHA is hard at work with legislation, conferences and continuing education activities that will benefit you. The School Based Affairs Committee is continuing to work on

a manual for entrance/exit criteria for school-based Speech Pathologists. Included in the manual we would like to have websites, articles, book suggestions and any other useful information that could be used by both new and veteran speech pathologists. I would like to encourage all of you that work in the schools to contact me if you would like to collaborate in this effort. MSHA would also like to know if you have suggestions of other topics that are important to you as a school-based clinician. Wishing you a wonderful school year!

Submitted by
Meredith Finnie
Chair. School Affairs

**Governmental Affairs:
Ways to help big and small**

The Governmental Affairs Committee (GAC) has been actively tracking legislation important to our membership and the professions of speech-language pathology and audiology at large in Massachusetts. Due to budget constraints, MSHA no longer employs a lobbyist. Instead, we have turned to technology to keep abreast of bills of interest to the Association. MSHA has subscribed to Insta-Trac, an internet service that follows the MA Legislature and posts happenings in the legislature, as well as the progress of any and all bills. This has provided MSHA a relatively easy way to follow important bills and alert membership when input may be needed.

How can each and every member be active in governmental affairs? There are several ways. The smallest, easiest thing to do is know your legislators. Find out by going to http://www.mass.gov/legis/city_town.htm. The next step would be writing a letter/e-mail to your legislators supporting/opposing a bill. If being more



she's
A REMARKABLE PERSON.

We need more
JUST LIKE HER.™

We have openings for dedicated professionals who want to make a difference. Enjoy the outstanding benefits and career advancement only Genesis offers.

 **Genesis HealthCare™**

 **Genesis Rehab Services**

Now hiring Speech-Language Pathologists and other rehabilitation professionals.

APPLY TODAY

at www.genesiscareers.jobs or contact **Sheryl-Lynn Haddad**
at **1-800-944-6331**
or **Sheryl-Lynn.Haddad@genesishcc.com**

EOE M/F/D/V

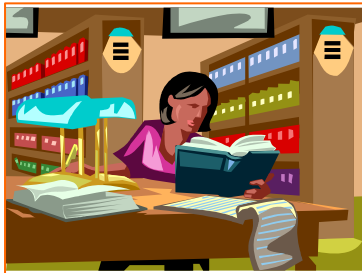
Thank you to Genesis HealthCare™

Silver Sponsor of the MSHA Fall 2009 Conference

involved is what you want, become a member who is willing to visit your legislator to discuss a bill or present/draft testimony for a hearing on a bill. A member can orchestrate a “day on the hill” to educate legislators what our professions entail. These are several ways members can be involved in GAC. If you are interested in finding out more or volunteering your time for a specific task, please e-mail gac@mshahearsay.org.

Submitted by
Kristen Keegan, CCC-SLP
VP. Program Development

Opportunities for Independent Study



MSHA often receives questions asking if certain types of continuing education activities may be used to obtain ASHA CEUs. Among those are workshops on various topics which may be related to the practice of speech-language pathology or audiology but are not offered for ASHA CEUs, study groups in which they are participating, or special topics that they want to study in depth. The answer in these cases is usually “yes” because an Independent Study can be developed. Here’s how MSHA may be able to help.

If you have a question about one of these activities above, the first step should be to contact MSHA as early as possible. All Independent Studies must be approved prior to the beginning of the activity. If you are thinking about a workshop that doesn’t offer ASHA CEUs or a study or project group, the plan must be in place prior to the initial date of the activity. ASHA does not permit retroactive approval or awarding of CEUs.

MSHA will then provide you initial information on the Independent Study, the application process, and the requirements. It is important to remember that an Independent Study is designed to advance *your* development needs as a communication disorders professional and that outcome goals must reflect how your skills will be advanced. You will need to specify resources, which might be readings, a speaker, or other method of obtaining the information you are seeking. Another major requirement is that you have an outcome product, which might be a set of guidelines for a given professional activity, a review or demonstration of the application of the material to your practice, or something similar. MSHA can provide advice for organizing this process.

Our next license renewal in Massachusetts is due on January 6, 2010. As you know, 20 hours or 2.0 CEUs of continuing education in the past two years is necessary for renewal. For Massachusetts licensure, 0.5 CEU or 5 hours of an ASHA approved Independent Study may be used for each Independent Study, and a total of 1.0 CEU or 10 hours may be used to meet the continuing education requirement for any given licensure period.

MSHA has a fee of \$30 for Independent Studies.

If you are considering an Independent Study or have further questions, please contact the MSHA Continuing Education Committee through the MSHA website, mshahearsay.org, or at the e-mail address below. You may also contact MSHA at 781-647-7031.

Submitted by
Dave Russell
davrusl@aol.com
Co-Chair, Continuing Education

MSHA provides its members with a number of ways in which information can be shared.

Method	Cost
www.MSHAHearSay.org	
Continuing Education program information is posted free of charge on the MSHA website at http://www.mshahearsay.org/upcomingevents.html (content may be edited for length)	Free
Web advertisements are offered to members at a reduced cost	\$150.00/month
The VOICE	
Do you have information to share about a program, project, resource or issue that is important to you? Write an article for the VOICE. All submissions are reviewed by The VOICE editor	Free
The VOICE offers advertising opportunities at a reduced cost	
Full page: 1 issue 4 issues	\$312.50 \$1125.00
½ page: 1 issue 4 issues	\$187.50 \$675.00
¼ page: 1 issue 4 issues	\$125.00 \$450.00
Business card: 1 issue 4 issues	\$25.00 \$90.00
Email Flash	
Reach the MSHA members via email. The MSHA office will send your email announcing a continuing education program or other non job posting content.	\$100.00
Labels	
A set of MSHA membership labels is available for one-time use.	\$100.00
Job Postings with Job Target	
Receive discounted rates on all Job Target products and services. For more information, go the MSHA website, www.mshahearsay.org , and click on the Job Opportunities button.	

Don't forget...you can use your \$5.00 membership coupon on any of the programs listed above except the job postings.



MSHA
411 Waverley Oaks Road
Suite 331B
Waltham, MA 02452
 781-647-7031
msha@camihq.com

Sharing the Responsibility for Literacy: SLP Roles in Response to Intervention (.7 CEUs)

Barbara J. Ehren, Ed.D., CCC-SLP

author of ***Response to Intervention: An Action Guide for School Leaders***.

Emerson College

September 26, 2009

8:00am – 5:00pm

This course is eligible for 0.7 ASHA CEUs (Intermediate level, Professional area).

Assessment of Learning Outcomes:

Performance Assessment - Participants will demonstrate their learning by (1) completing application tasks in small groups; (2) developing an action plan to work within RTI to provide inclusive language services.

Abstract:

For many years SLPs have been encouraged to assume expanded roles with literacy. Now they are being asked to assume roles with RTI (Responsiveness to Intervention). How might these trends be related? Most importantly, how can SLPs make unique contributions to literacy within RTI approaches while maintaining a reasonable workload? Participants in this workshop will explore what RTI is and what it is not. They will learn the opportunities this approach presents to SLPs to redefine their roles with literacy, as well as the pitfalls to avoid. They will explore practical ideas to make this all happen.

Who should attend:

- ❑ SLP's working in the school system
- ❑ Special Education providers
- ❑ Teachers

Learner outcomes:

As a result of participation in this activity the learner will:

- ❑ Discuss a common understanding of RTI.
- ❑ Compare and contrast the respective language/literacy roles of classroom teachers, SLPs and other professionals within RTI models.
- ❑ Explain essential features of RTI approaches.
- ❑ Identify new and expanded literacy roles for SLPs within RTI initiatives.
- ❑ Discuss implementation opportunities and challenges.
- ❑ Explore requirements for SLP involvement.
- ❑ Explore pitfalls to avoid in design and implementation of RTI approaches.
- ❑ Design a personal action plan to address RTI within your sphere of influence.



Biography:

BARBARA J. EHREN, ED.D is currently the Director of the Doctoral Program in Communication Sciences and Disorders at the University of Central Florida, a collaborative program focusing on language and literacy.

She has a special interest in assisting school districts to build capacity at the school level for more effective literacy programs for diverse learners. She is a frequent consultant to school districts and professional associations. A recurrent theme of her work is shared responsibility for literacy acquisition at the school level.

Her current research activities revolve around strategic reading with adolescents. A recent publication is *Response to Intervention: An Action Guide for School Leaders*.

Prior to her work at the University of Central Florida she was a researcher with the University of Kansas Center for Research on Learning (KUCRL) where her emphasis was on adolescent literacy. Before joining KUCRL she completed eleven years of service to the School District of Palm Beach County, Florida, where she last served as Manager of Professional Development. She also served as the Manager of Exceptional Student Education, Program Planner for

Inclusive Education and Program Planner for Speech-Language Impaired. Prior to that she was a professor of learning disabilities and communication disorders for fifteen years at Florida Atlantic University. She has been a speech-language pathologist, as well as a classroom teacher in the schools. She is a Fellow of the American Speech-Language-Hearing Association (ASHA) and has served on several key ASHA committees, including the Ad Hoc Committee on Reading and Writing. Currently, she is the chair of the Ad Hoc Committee on the Roles and Responsibilities of the School-Based SLP. Dr. Ehren was awarded the Clinical Career Achievement Award by the Florida Language, Speech and Hearing Association. She was a consultant to the National Institutes of Health (NIH) in their formulation of the national research agenda in adolescent literacy and was an editor of the Guilford series on Challenges in Language and Literacy. She currently serves on the RTI Action Network Advisory Board, the International Reading Association RTI Commission and on several journal editorial boards.



The Massachusetts Speech-Language-Hearing Association is approved by the Continuing Education Board of the American Speech-Language-Hearing Association (ASHA) to provide continuing education activities in speech-language pathology and audiology. See course information for number of ASHA CEUs, instructional level and content area. ASHA CE Provider approval does not imply endorsement of course content, specific products or clinical procedures.



Registration Form

Sharing the Responsibility for Literacy: SLP Roles in Response to Intervention (.7 CEUs)

Barbara J. Ehren, Ed.D., CCC-SLP

Registration: (meals not included)

Check one:

- Member registration \$125 (meals not included)
- Non-member registration \$150

Payment Method:

- Check enclosed
- P.O.# _____
- Charge my Visa / Master Card (*circle one*)

Card Number _____

Exp. date: _____ CVV Code: _____

Signature: _____

Name _____

Address _____

City _____ State _____ Zip _____

Phone _____ Email _____

Register online at www.MSHAHearSay.org or return completed registration form to:

MSHA

411 Waverley Oaks Road, Suite 331B
Waltham, MA 02452

Phone: 781-647-7031 ~ Fax: 781-647-7222 ~ Email: msha@camihq.com